

# Food Menu

Kayem <sup>®</sup> Natural Casing	
Hot Dog on Grilled Roll	\$3.00
Cheese Dog	\$3.50
Grilled Cheese	\$3.00
Home Made Cookies	\$1.00

# Lime Rickeys

*Regular, Raspberry,  
Cherry, or Strawberry*

Regular Size (16 oz)	\$5.00
Giant Size (32 oz)	\$6.00
<i>Also Fresh Squeezed Lemonade,</i>	
(In season)	

# Ice Cold Drinks

Coca-Cola<sup>®</sup>, Diet Coke<sup>®</sup>,  
Root Beer, Sprite  
**\$1.75—\$2.00—\$2.50**

All Prices accurate as of March 1, 2021  
Prices Subject to Change without Notice  
Boy & Dog Logo<sup>®</sup> Markus Registratus  
Menu Design ©2019-2020 by  
Chelmsford Creamery Inc.

# Our History

Since 1953 there has been an ice cream shop at our location. Firth Farms, Pine Valley Farm/Lavoie's Dairy, Crowley Farms, Little Maggies, Gary's Ice Cream and now Chelmsford Creamery. We make all our own ice cream on site using the freshest New Hampshire milk & cream, Imported Cocoa, Pure Vanilla and other locally sourced ingredients. During the 48 years that Gary's Ice Cream existed they perfected the formulas which Chelmsford Creamery still uses to make all of our own Ice Cream, Fudge Sauce, Syrups, Cookies, Brownies Crisps and Shortcakes.

*Kenny Baudanza, Mike Griffin,  
Isaac Silverman  
Managing Partners*

## 2021 Hours\*

March — April  
7 Days A Week 12p Noon—9pm

**May 1 - Labor Day**  
7 Days A Week 11 am —9 pm

**Labor Day — Closing Day**  
7 Days A Week 12p Noon—9pm

\*Hours subject to change without notice

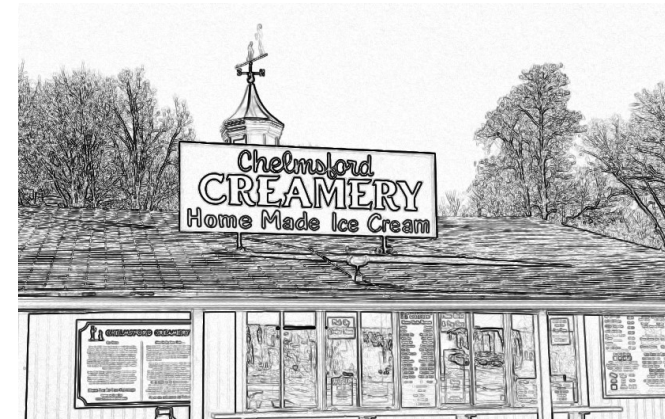
If anyone in your party has a food allergy, please alert your server. All products are made on common equipment with products that contain Tree Nuts, Soy, Dairy, and Wheat.



# Chelmsford CREAMERY

131 Gorham Street - Rt 3A  
East Chelmsford, MA 01824  
978-458-0100

info@chelmsfordcreamery.com  
www.chelmsfordcreamery.com



**All Ice Cream Made on the Premises  
Our Own Home Made Hot Fudge**

**Seldom Equalled - Never Excelled**

*Chelmsford's Oldest Home Made Ice Cream  
Shop - Opened in the 1950s!  
Owned & Operated by  
Chelmsford Creamery Inc*

# Ice Cream Menu

Kiddie Cone or Cup	\$5.00 <sub>(1 Scoop)</sub>
Small Cone or Cup	\$6.00 <sub>(2 Scoops)</sub>
Medium Cone or Cup	\$7.00 <sub>(3 Scoops)</sub>
Large Cone or Cup	\$8.00 <sub>(4 Scoops)</sub>
Small Sundae	\$7.50
<small>(1 Flavor Ice Cream, 1 Topping, 1 Finish, &amp; a Cherry)</small>	
Large Sundae	\$8.75
<small>(1 or 2 Flavors Ice Cream, 1 or 2 Toppings, 1 Finish, &amp; a Cherry)</small>	
<b>Sundae Topping Choices</b>	
<small>Hot Fudge, Pineapples, Strawberries, Butterscotch, Peanut Butter, Caramel or Marshmallow</small>	
<small>FINISHES include Whipped Cream or Marshmallow</small>	
<small>Walnuts or Jimmies 50¢ extra on any item</small>	
Banana Split	\$9.75
<small>(Whole Banana Sliced, Van,Choc,Straw Ice Cream with Pineapples, Strawberries, Choc Syrup, Whip Cream &amp; a Cherry*)</small>	
Brownie Sundae	\$8.75
<small>(Home Made Brownie, Ice Cream, Fudge Sauce, Whip Cream)</small>	
Old Fashioned Frappe	\$7.25
<small>(Any flavor of Ice Cream)</small>	
Ice Cream Soda	\$7.25
Freeze	\$7.25
<small>(Orange, Creamsicle, Root Beer)</small>	
Floats	\$7.25
<small>(Your choice soda &amp; Ice Cream)</small>	
Fruit Smoothie	\$6.50
<small>(when avail)</small>	
Frosty Paws	\$2.00
<small>(for your Dog)</small>	

\* No Flavor Changes or Topping Substitutions Please.

**All Prices INCLUDE State  
& Local Meals Tax 7% total**  
6¼% Mass Meals Tax  
& ¾% Chelmsford Local Option Meals Tax

# Ice Cream Flavors

## *All Home on the Premises*

Vanilla	Banana
Chocolate	Grapenut*
Coffee	French Vanilla
Strawberry	Mud Bog
Chocolate Chip	Cake Batter
Mint Choc Chip	Salty Caramel Truffle
Mocha Chip	Frozen Pudding
Maple Walnut	Graham Central Station
Pistachio	Cherry Vanilla
Chocolate Walnut	Coconut*
Choc Decadence	Cotton Candy
Butter Pecan	Raccoon Tracks
Cookie Dough	Peppermint Stick
Cookies & Cream	<b>SHERBETS</b>
Black Raspberry	Orange
Orange Pineapple	Rainbow
Dutch Apple*	<i>*seasonal flavor</i>

# Take Home

Hand Packed Pint <sub>(1 lb)</sub>	\$8.50
Hand Packed Quart <sub>(2 lb)</sub>	\$14.00
Hand Pack Half Gallon <sub>(4lb)</sub>	\$25.00
Freezer Pak Half Gallon	\$18.00
<small>(Only certain flavors available - ask Cashier for more info)</small>	
Pint of Sundae Topping	\$7.00
<small>(When available only)</small>	
14 oz can Whipped Cream	\$4.75
Cake Cones (plain cone)	25¢ ea
\$1.25 per ½ dzn	\$2.25 per dzn
Sugar Cones	25¢ ea
\$1.25 per ½ dzn	\$2.25 per dzn
Home Made Waffle Cone	\$1.00
Jimmies/Sprinkles (cup)	50¢
Jimmies/Sprinkles (per lb)	\$5.00
Chopped Walnuts (cup)	50¢
Chopped Walnuts (per lb)	\$9.95

**Ice Cream Sandwiches**  
 each \$5.50  
*Custom Made to order  
 with your choice of ice cream  
 between 2 of our home made  
 chocolate chip cookies.*